



113-2



Study Group

Learning
Together




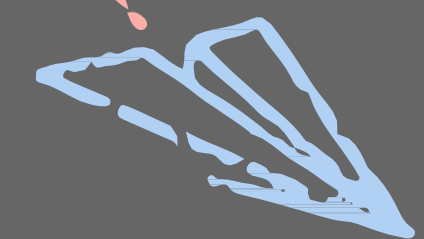
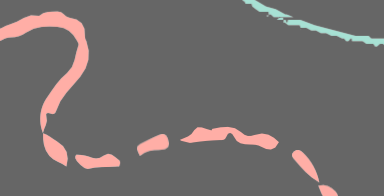
Center for Teaching and Learning Development



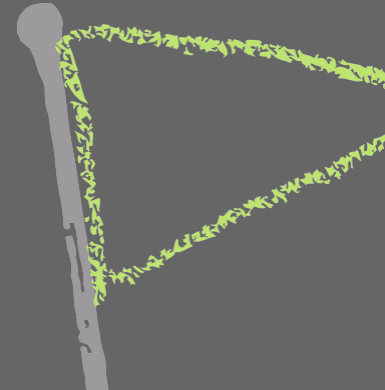



What is Study Group?

- 
- Study group is a self-learning group consists of multiple students.
 - Students study together after school for reading, learning and sharing the experience
 - and problems.



Students can get more ideas and develop the habits of self-learning by encouraging each





Do I need to participate a Study Group ?

- You can group up (participate) a study group by finding the partners.
- Study group works in your free time.
(not in class time)
- Welcome to group up (participate) a study group if you want to learn with classmates.👍



Study Group



What are the benefits to participate a study group?

-

The purpose of study group is to encourage each other and improve the willingness for self-learning.

Discuss learning schedule, prepare the exam for professional certification, and improve academic performance.

Join the study group can improve the relationship among the classmates by studying together.

Application Qualifications

Each group should have at least 5 students, and one of whom is the convener.

Teachers can be invited to be the supervisor for study group.

Apply to E-portfolio before the deadline.





Q1.Topics

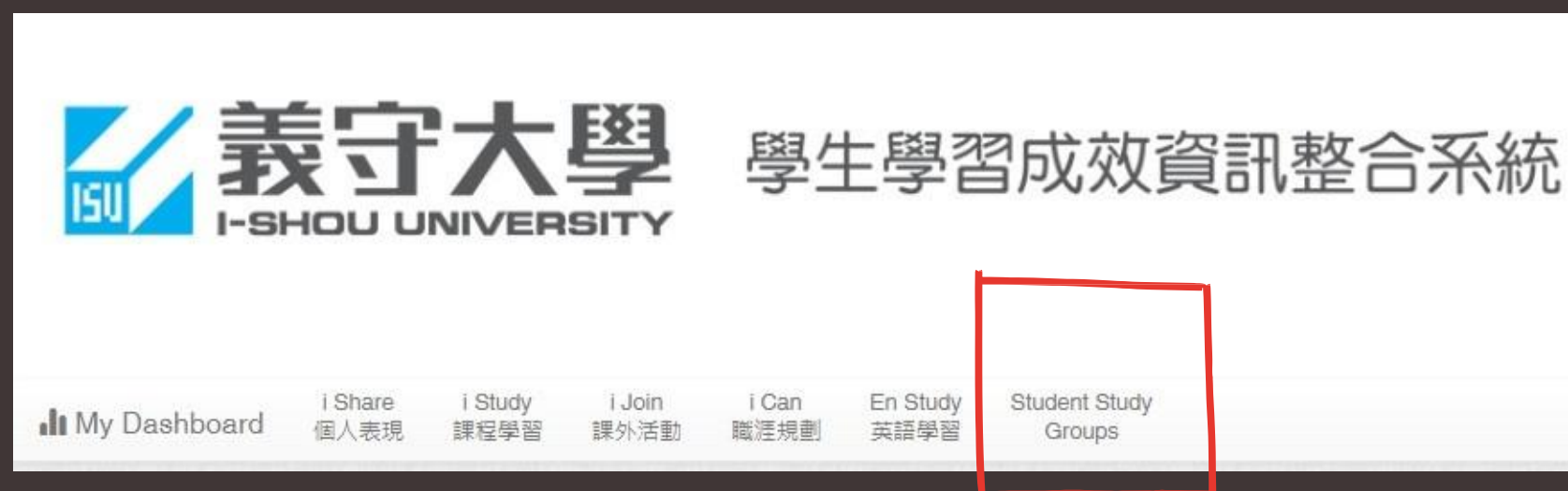
- Improving academic
 - performance
 - Licensure/Certificati
 - on National exam
- Hands-on
Experience

Q2.How to do?

- Step 1
 - Application
 - Step 2 Planning
 - Step 3 Conduct
- Step 4 Final
report

Submit Application

- APPLICATION : JAN.13(MON.) To 23:00, FEB.23(SUN.), 2025
- Application method: Online application (I-SHOU → Current Student → E-portfolio → 113-2 Study group)



Submit Application

Student Study Groups

113-2學生學習社群

Beginning of application 1/10/2025 8:00:00 AM

Deadline for application 2/23/2025 11:59:00 PM

Deadline for uploading 6/22/2025 11:59:00 PM

Apply

Application Status

113-2學生學習社群

The following information will be used for assessing the eligibility for subsidies. Please complete as specific as possible.

Convener's name

Convener's student No.

Convener's email

Convener's mobile

Supervisor' name

Theme of the student study group

☐

Improving academic performance

☐

National exam

☐

Licensure/Certification

☐

Hands-on Experience

Whether the group is related to English learning

☐

No

☐

Yes

Name of student study group

Name of student study group

Members

Please enter all members' student No. (6~20 members except the convener, and separate each member with ",". Ex: 10801001A, 10801002A)

Goal

Please describe what goals you want to achieve at the student study group.

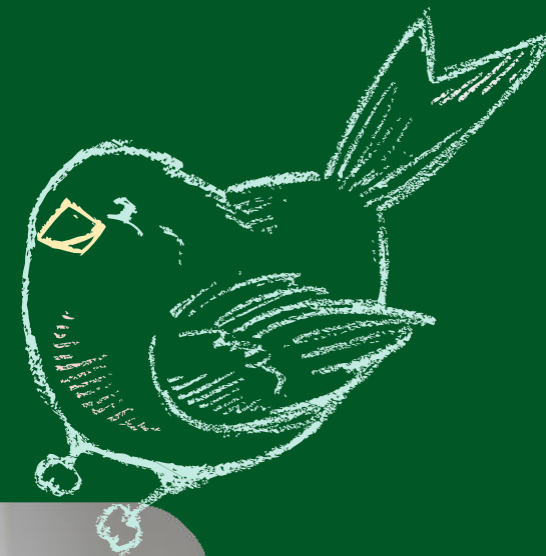
Activity plan

Please describe the activities you plan for the student study group

Expected outcome

5-20 people

Event Planning



- Activity deadline: FEB.24(MON.) to JUN. 13(FRI.),
- 2025 Group members shall meet at least six times during the semester. Each meeting shall last 1 to 3 hours; total meeting hours can't be less than 12
- hours.

Group members must meet on the ISU campus.
(Such as: classroom, meeting room or laboratory)



Submit

Application



safe dining experience

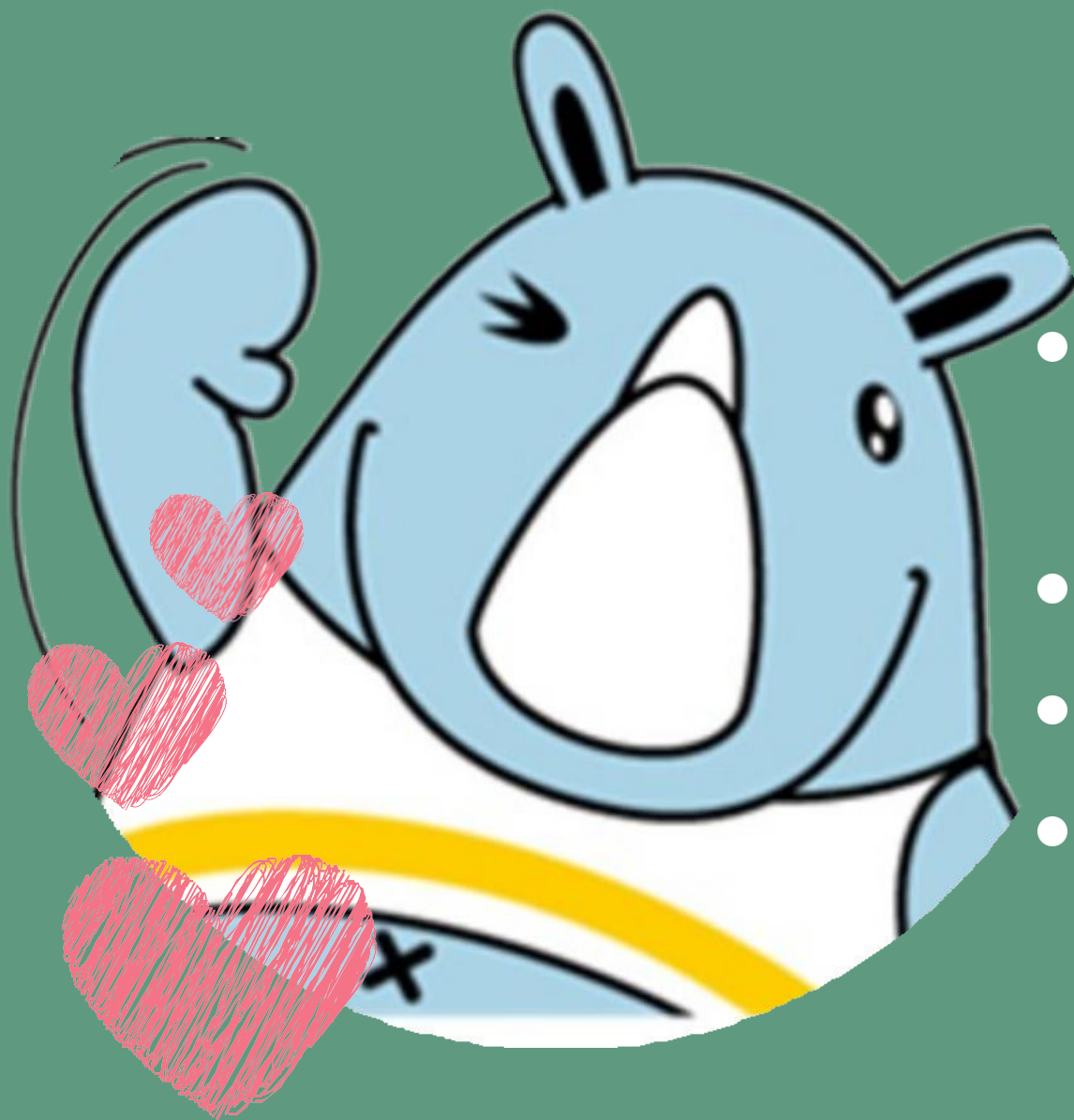
1. Scan QR code for our staff for a copy of single-use menu
2. Less talking is more safe. Please wear down your orders on the order slip provided.
3. Cashless payment is highly encouraged. We accept E-wallet.



SCAN ME



Contact



- 學發展中心
(Center for Teaching and Learning Development)
- 丁文 婷(DINGWEN TING)
- 07-6577711#2145
- E-mail : vivian0804@isu.edu.tw